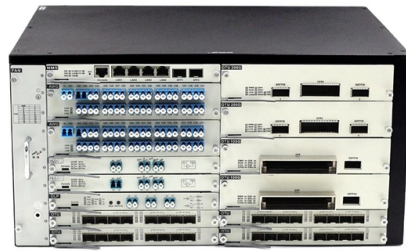


Design of Ground Wire Location for Distribution Box



Overview

Check for proper IP/NEMA ratings and material quality. Ensure safe placement: install in dry, accessible areas with good ventilation and at appropriate height (typically ~1. Practice good wiring: secure grounding, neat cable management, proper insulation, and correct. Power from factory ground must be installed by a qualified electrician. Each DISTRIBUTION BOX and controller must be grounded. 26 mm² (10 AWG) ground wire must be used, and in all other markets a 6 mm² must be used. Grounding of the units: Attach a ground wire from one of. Whether you're a seasoned pro or just starting out, this comprehensive guide will give you practical insights into proper grounding techniques, with a special focus on how selecting quality materials from a reliable building material supplier impacts your entire system's safety and longevity. SEC Distribution System extends from the MV (33 kV, 13.8 kV) feeder outlets of HV / MV Substations down to SEC Customer interface including KWH-Meters and meter boxes. This helps to reduce the potential difference that exists between conductive parts and the earth.

Article Content

A Step-by-Step Guide to Wiring an Electrical Panel Box

A Step-by-Step Guide to Wiring an Electrical Panel Box An electrical panel box, also known as a breaker box or a distribution board, is a crucial component of any

DISTRIBUTION BOX

Each DISTRIBUTION BOX and controller must be grounded. On the US market, a 5.26 mm² (10 AWG) ground wire must be used, and in all other markets a 6 mm² must be used.

Microsoft Word

All accessible metal work of all distribution equipment is always grounded and connected to system neutral at MV / LV substations, distribution pillars, and consumer locations. Below mentioned

How to Wire a Home Distribution Box

How to Wire a Home Distribution Box - Step-by-Step | Distribution DB box wiring diagram Welcome to our channel! In this video, we'll walk you through

GROUND GRID SPECIFICATIONS

Each Power Circuit Breaker or Power Transformer having a bushing Voltage Transformer on the tank shall have the Voltage Transformer provided with a separate ground lead, independent of the

The Importance of Ground Wires in the Breaker Box: A

The ground wire in a breaker box is a crucial element of an electrical system, providing safety and preventing electrical shocks. Learn more about its

Grounding Practices in Power Distribution Systems

Location and Installation: Grounding transformers should be strategically placed, often at substations or along distribution lines. This is particularly important when

How do you ground a plastic electrical box

Install a ground wire: If your box doesn't already have a ground wire, you need to install one first. One end of the ground wire should be connected to a

Electrical wiring harness ground distribution and layout principles

In summary, proper ground distribution in wiring harnesses follows key principles: 16–20 AWG wires typically handle grounding, with dedicated ground points placed within 18 inches (45 cm) of

How To Wire A Distribution Board (DB Board): A Step-By-Step Guide

A distribution board (DB board), also known as a fuse box or breaker panel, is essential for managing electrical circuits in a building. It distributes electrical power from the main supply to

How to Install a Distribution Box—A Comprehensive

Reliably grounded: Reliable grounding of the distribution box is critical to prevent electrical shock and other safety hazards. The grounding wire should

Everything You Need to Know About Load Center

Load Center Wiring Diagrams: All You Need to Know When it comes to electrical systems, load center wiring diagrams are an essential tool for understanding how

Transmission Line Grounding Guide

Effective grounding is comprised primarily of overhead ground wires, ground conductors, and ground electrodes. The primary focus of this guide is on ground conductors and ground electrodes whose

Correct Connection Method Of Grounding Wire Of

Generally, copper core wire is selected as the ground wire and connected to the PE wiring bar. When connecting, it is necessary to strip the wire

How to confirm whether the installation location of the

The electrical distribution box plays a vital role in the power system. It is responsible for distributing electricity to various circuits and equipment.

System Grounding

Knowledge of the various types of system grounding and performance characteristics is critical when designing or operating an electrical system. The voltage, system arrangement, loads connected, and

CHAPTER 7 DESIGN FOR DISTRIBUTION FACILITIES

Tension -To reinforce straight distribution line against wind pressure wind pressure - In undulated area, if necessary, guy wire shall be installed. Use of stay wire for 20 kV pole 9 m - 200 daN (substructure)

Distribution System Neutral Grounding Methods and Transformer

Readers should refer to and follow industry technical and safety design guidelines and processes in relation to neutral grounding practices and design and refer to the EPRI Engineering Guide for

How to determine the size, installation method and

(1) Wiring method of distribution box 1) Generally, the incoming line of power distribution box adopts five wire system, that is, a, B and C three-way phase line

How to Wire a Single Phase Breaker Box: Step-by-Step

A typical wiring diagram for a single-phase breaker box would include the diagram of the breaker box itself, showing the various circuit breakers and their ratings. It

Understanding Distribution Boxes: A Comprehensive Guide

A distribution box, also known as a power distribution box or electrical distribution box, is used to distribute electrical power safely to multiple

Grounding System Installation Standards for Distribution Boxes and ...

Whether you're a seasoned pro or just starting out, this comprehensive guide will give you practical insights into proper grounding techniques, with a special focus on how selecting quality materials

The installation requirements for the distribution box

Learn how to install a distribution box safely and correctly. Covers wiring, placement, standards, and expert tips for a compliant setup.

Contact Us

For more information, pricing, or custom solutions, please contact us:

Website: <https://charratcommunication.fr>

Email: sales@charratcommunication.fr

Phone: +33 1 42 68 93 17

Address: 15 Rue de la Paix, 75002 Paris, France

This document is for informational purposes only. Specifications subject to change without notice.

