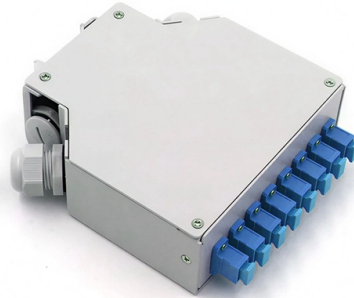


Electrical Distribution Box Function Indicator Labels



Overview

All components should have legible labels indicating the equipment's function (e. "Lights - Warehouse Area C"), electrical rating if applicable (voltage, amp phase), and potential arc flash or electrocution hazards. It has many important jobs to help your home work well. Here is a simple table that shows what it does: Sends electricity from the main supply to each circuit. Every area gets the power it needs. Branch Circuit Breakers: Control power to individual circuits (rooms, appliances, outdoor areas). In older homes, circuits may have been added or altered. According to the Electrical Safety Foundation International (ESFI), the majority of electrical fatalities occur in electrician and construction occupations, followed by installation, maintenance, and repair occupations. This is an internal LLNL standard meant to guide the design of new facilities, facility modifications, and.

Article Content

Essential Electrical Labeling for OSHA Electrical Safety

Improve electrical panel organization with durable labeling that supports OSHA electrical safety training and standards. Practical tips for contractors.

Unlock Your Electrical Panel: How To Read Circuit Breaker Labels

Circuit breaker labels tell you which electrical circuits in your home are controlled by each breaker. They help you quickly find and turn off power to specific areas or appliances, which is

Circuit Numbering and Labeling for Electrical Equipment

This standard describes requirements for numbering and labeling of real property electrical distribution equipment, circuits, and site lighting at Lawrence Livermore National Laboratory.

Distribution Box vs Control Box vs Junction Box: Key

Learn the differences between distribution boxes, control boxes, and junction boxes. Discover their functions, applications, and how E-abel provides

Common Electrical Symbols

This is not a definitive list of all symbols used in electrical identification, but merely a guide to some of the more commonly used symbols. Due to the number of variants used, there may have several

Breaker Box Labeling: Step-by-Step Safety & Efficiency

In this comprehensive guide, you'll learn why labeling matters, how to do it thoroughly and correctly, which tools and materials to use, and best

How to Read Your Electrical Panel | Mr. Electric

Whether you've never looked at your electrical panel or you're baffled by the equipment inside, you're not alone. Your breaker panel controls the

Electrical Panel Labeling Standards: Easy Guide

Proper labeling not only helps prevent accidents but also ensures compliance with

How To Label Your Electrical Panel for Home Safety

The electrical panel, also called the breaker box or service panel, is the control center of your home's electrical system. Labeling the breakers in your

How to Read and Interpret Your Distribution Box Labels

Understand your distribution box labels to identify circuits, improve safety, and troubleshoot electrical issues in your home with confidence.

Electrical Panel Labels and How to Mark Them | Family

Does every breaker in an electrical panel need to be labeled? Find out the answer from an electrical inspector. It's pretty common for labels on electrical

Understanding Your House's Electrical Panel: A Visual

Understanding the electrical panel in your house is essential for homeowners to ensure the safety and functionality of their electrical systems. The electrical panel,

How To Label An Electrical Panel

A clearly labeled electrical panel is essential for a variety of reasons. However, if your electrical panel doesn't feature clear labels, it's time to change

Distribution board

A distribution board (also known as panelboard, circuit breaker panel, breaker panel, circuit breaker, electric panel, fuse box or DB box) is a component of an electricity supply system that divides an

Electrical Panel Labeling Standards: Easy Guide

Electrical panel labeling standards come from many regulatory agencies, so it's important to learn about the specific requirements that apply to your workplace.

Guide on How to Label Electrical Panel & Electrical

Safety: Accurate and consistent labeling of equipment can help prevent accidents by providing clear information about the equipment's function, voltage, and other

The Complete Guide to Electrical Panel Labeling:

Electrical panel labeling refers to the systematic identification of each circuit breaker or fuse in your electrical distribution panel with clear, descriptive

Electrical Symbols

The following table provides the commonly used electrical wiring schematic symbols for connectors which comply with the IEC and BS Electrical Symbols. These connectors include plug and socket,

Electrical Equipment Labeling: Safety Guide | Highland

All components should have legible labels indicating the equipment's function (e.g. "Lights - Warehouse Area C"), electrical rating if applicable

A Homeowner's Guide to Reading the Circuit Breaker

A circuit breaker is an essential safety device in your home's electrical system. Designed to safeguard your home from electrical issues, it interrupts the flow of

How to Read a Breaker Box and Understand the Labels

The essential guide to reading your breaker box. Understand safety protocols, interpret circuit labels, and manage your home's power system.

Electrical Panel Labeling: Clear & Simple Compliance

Learn electrical panel labeling standards, requirements & best ways to label an electrical panel for safety, compliance, and easy identification.

What Are the Electrical Panel Labeling Standards?

Electrical panel labeling standards dictate the format, content, and placement of labels to provide clear and concise information about the electrical

Contact Us

For more information, pricing, or custom solutions, please contact us:

Website: <https://charratcommunication.fr>

Email: sales@charratcommunication.fr

Phone: +33 1 42 68 93 17

Address: 15 Rue de la Paix, 75002 Paris, France

This document is for informational purposes only. Specifications subject to change without notice.

