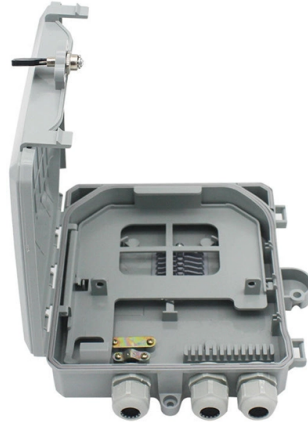


# Gigabit optical module to electrical port Huawei



## Overview

HAILE Gigabit Optical to Power Port Module SFP-GE-T is a high-performance SFP transceiver designed to convert optical signals to electrical power signals seamlessly. SFP-1000BaseT cannot be used on a combo port. 25G data rate and RJ45 interface, this module provides reliable Gigabit Ethernet connectivity up to 100 meters. Fully. Huawei original electrical port module SFP-GE-T official website provides a total of four models, of Moduletek Laboratory on the 02313GCE model sample module testing, to facilitate a further understanding of the product's performance indicators and the effect of actual machine use. But in some specific cases, such as making some settings to force the speed of the 10Gbps optical module to Gigabit, the 10Gbps optical module can be used as a Gigabit optical module. An optical module is a component that completes electrical/optical conversion on an optical. Huawei offers a comprehensive portfolio of pluggable StarryLink optical modules for data center networks, with various models providing flexible plug-and-play solutions tailored to diverse interface requirements.

## Article Content

### Optical/Electrical Module

You can use different levels of 10 Gbit/s XFP optical modules with OC-192/STM-64 POS interfaces and 10 GE interfaces. The wavelength of these 10 Gbit/s XFP optical modules can be 850

Can Huawei's 10Gbps optical module be connected to a Gigabit

However, the issue of whether Huawei's 10Gbps optical module can be connected to a Gigabit optical port has triggered widespread discussion and concern. This article will explore this issue in depth in

### Installing Optical Transceivers and Connecting Optical Fibers

Installing Optical Transceivers and Connecting Optical Fibers This section describes how to install optical transceivers on the SFP or SFP+ ports and connect them to the ports of the peer device using

### Huawei S5731-S48T4X 48-Port Gigabit Network Switch

High-performance Huawei S5731-S48T4X switch with 48 Gigabit ports, 4 SFP+ slots, 336Gbps capacity, and robust surge protection. Ideal for enterprise networks.

Amazon : Optical to electrical port module photoelectric

Product Description Modules Optical to electrical port module photoelectric conversion RJ45 optical fiber module 1.25G optical port to gigabit electrical port optical module compatible with H3C h3c

Empowering Enterprise Connectivity: An In-Depth Look at the Huawei ...

The Huawei S5735-L48P4X-A stands as a premier solution for modern enterprise access, offering a high-density gigabit foundation for digital transformation. Within the fast-paced world of

huawei+optical+module+supplier+list

21 Companies and suppliers for huawei+optical+module+supplier+list Find wholesalers and contact them directly Leading B2B marketplace Find companies now!

### 10 Gbit/s SFP+ Optical Modules

10 Gbit/s SFP+ optical modules apply to 10 GE optical ports. The wavelength can be 850 nm, 1310 nm, or 1550 nm, and the transmission distance ranges from 0.5 km (0.31 mi) to 80 km (49.71 mi).

### Overview of SFP Gigabit Optical Module

To correctly use an SFP gigabit optical module, follow these professional steps: Select a suitable SFP optical module based on network requirements and transmission distance, considering

Haile SFP-10G-T 10G RJ45 Optical Module | Compatible with Cisco,

The Haile SFP-10G-T module brings you the performance of a 10 Gigabit Ethernet network without the need for expensive fiber optic cables. It converts SFP+ optical ports into high-speed RJ45

10GE SFP+ Optical Modules

OMXD30000 OSX010000 OSX040N01 OSXD22N00 SFP-10G-BXD1 SFP-10G-BXU1  
SFP-10G-ER-1310 SFP-10G-ER-SM1270-BIDI SFP-10G-ER-SM1330-BIDI SFP-10G-LR-I  
SFP-10G-USR SFP-10G

SFP Optical Transceivers: How Pluggable Optics Are Reshaping

2. What Is an SFP Optical Transceiver? An SFP transceiver is a compact, hot-swappable interface module designed to convert electrical signals from a network switch or router into optical

Huawei Original Electrical Port Module SFP-GE-T model 02313GCE

According to the configuration of the 02313GCE sample PHY chip, its initial mode is pure Gigabit with the Los pin enabled.

Optical/Electrical Modules

1 Gbit/s eSFP optical modules apply to the GE optical ports of Combo ports and GE optical ports. The wavelength can be 850 nm, 1310 nm, or 1550 nm, and the transmission distance ranges from 0.5 km

Optical Transceivers Market 2026

The global optical transceivers market is shaped by a concentrated group of large-scale manufacturers that collectively command the majority of global revenue. Companies such as II-VI (Finisar),

Small Form-factor Pluggable

Small Form-factor Pluggable connected to a pair of fiber-optic cables Small Form-factor Pluggable (SFP) is a compact, hot-pluggable network interface module

Optical Terminal

The OptiXstar product series extends optical connectivity to every home, enterprise, and campus, bringing families closer and making enterprise operations far more

Optical Modules for Huawei S Series Switches

To determine whether optical modules delivered for Huawei switches before July 1, 2013 are certified ones, contact Huawei technical support. If your optical modules are delivered after July 1, 2013, use

### 10 Gbit/s SFP+ Optical Module

HUAWEI AntiDDoS8000 V500R005 Hardware Description 10 Gbit/s SFP+ Optical Module You can use different levels of 10 Gbit/s SFP+ optical modules only with 10 GE interfaces.

### Optical Modules in General-Purpose Computing Scenarios

Huawei offers a comprehensive portfolio of pluggable StarryLink optical modules for data center networks, with various models providing flexible plug-and-play solutions tailored to diverse interface

### Understanding Optical Modules

On an optical network, a sender needs to convert electrical signals into optical signals before sending them to a receiver, and the receiver needs to convert received optical signals into

### Understanding Pluggable Optical Modules

Therefore, when using such optical modules, select optical fibers of an appropriate length to ensure that the actual receive power is smaller than the overload power. If the optical fibers connected to a long

### HAILE Gigabit optical to power port module SFP-GE-T 1.25G RJ45

Supporting 1.25G data rate and RJ45 interface, this module provides reliable Gigabit Ethernet connectivity up to 100 meters. Fully compatible with major brands including Huawei, H3C, Ruijie,

### 1 Gbit/s SFP Optical/Electrical Modules

1 Gbit/s SFP optical/electrical module apply to GE interfaces for interconnection between GE optical and electrical interfaces. SFP-1000BaseT

### 10GE SFP+ Optical Modules

This document provides an overall description of the CE12800 series switches hardware, helping you obtain detailed information about each chassis, power module, fan module, card, cable, and

### Optical Access

MiniFTTO Solution Huawei's MiniFTTO solution provides dual-band Wi-Fi 6, enabling ultra-gigabit all-optical wired and wireless access anywhere. It supports

### Optical Modules for Huawei S Series Switches

A switch must use optical or copper modules that have been certified for use on Huawei switches. Non-certified optical or copper modules cannot ensure transmission reliability and may affect service

Huaweis SFP-1000BaseT Gigabit Optical to Electrical Module

Product name:Fiber Optic Fusion Splicer;Application:FTTTH FTTTB  
FTTXX;Wavelength:1310/1550nm;Fiber Type:Single Fiber Single Mode;Certification:CE  
RoHS

## Contact Us

For more information, pricing, or custom solutions, please contact us:

Website: <https://charratcommunication.fr>

Email: [sales@charratcommunication.fr](mailto:sales@charratcommunication.fr)

Phone: +33 1 42 68 93 17

Address: 15 Rue de la Paix, 75002 Paris, France

This document is for informational purposes only. Specifications subject to change without notice.

