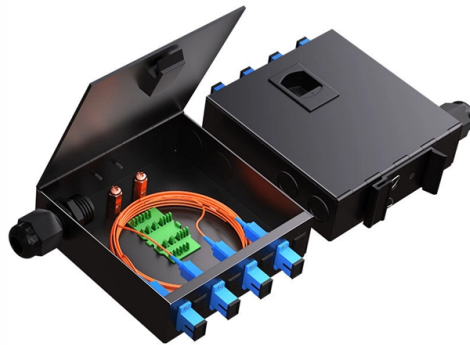


Good stuff inside high-voltage distribution boxes



Overview

High-voltage distribution boxes are super important in today's electrical setups. Think of them as the main hubs that make sure electricity gets to where it's needed, efficiently. Inside these boxes, you've got some key parts like circuit breakers, transformers, and protective. As a key electrical equipment for receiving and distributing high-voltage electric energy in the power system, the high-voltage distribution cabinet plays an indispensable role in the safe and stable operation of the power system. It brings together busbars. To support these demands, HUBER+SUHNER delivers innovative modular distribution boxes engineered to adapt to the changing requirements of modern vehicle architectures. HUBER+SUHNER's modular High Voltage Distribution Unit (mHVDU 800) can be tailored to customer specifications with a short lead. In the power distribution, except for the line, we use the most is the switchgear, the structure of the switchgear is generally similar, mainly divided into busbar room, circuit breaker room, secondary control room (instrument room), feeder room, and there is generally steel plate isolation between.

Article Content

What does a distribution box do?

3. Choose the right type: Choose the type of distribution box according to actual needs. For example, low-voltage distribution boxes are

What are the components inside the high-voltage distribution cabinet?

Discover the essential components inside a high-voltage distribution cabinet, including circuit breakers, transformers, busbars, protection relays, and more. Learn how these elements work

Understanding the Importance and Safety Features of High-Voltage ...

High-voltage distribution boxes are super important in today's electrical setups. Think of them as the main hubs that make sure electricity gets to where it's needed, efficiently. Inside these

Explore Power Distribution Box Types and Functions

Power distribution boxes are used in commercial and residential buildings and are part of the electrical system, also known as switchboards.

What are the components inside the high-voltage distribution cabinet?

Box-type high-voltage distribution cabinet consists of shell, circuit breaker, high-voltage load switch, instrumentation and cable connection components. Suitable for outdoor use, with

Design of New-Type Power Distribution Cabinets

Explore innovative design strategies for HV/LV power distribution cabinets and boxes, focusing on safety, reliability, smart control, structural optimization, and

What is the Internal Structure of The Distribution Box

Learn about the internal structure of a distribution box, its components, functions, and key types. Understand its role in electrical systems

Understanding Distribution Boxes: A Comprehensive Guide

A distribution box, also known as a power distribution box or electrical distribution box, is used to distribute electrical power safely to multiple

Best Material for LV Distribution Box | Axis Electricals

Learn which material is ideal for your LV distribution box. Axis Electricals explains how to choose the right enclosure for safety, durability, and

Power Distribution Boxes Explained Simply

Distribution boxes here are designed to support high voltages, heavy machinery, and critical operations. They often include special safety features for

High voltage power distribution units

The mHVDU 800 is a configurable solution designed by HUBER+SUHNER to distribute high voltage power efficiently within electric vehicles (EVs). Its modular

High-voltage power distribution box design resources | TI

View the TI High-voltage power distribution box block diagram, product recommendations, reference designs and start designing.

What's Inside an Energy Storage High Voltage Box? A Deep Dive into

Meet the energy storage high voltage box —the unsung hero working backstage. Think of it as the ultimate electricity traffic controller, directing energy flow like a seasoned orchestra conductor. In this

High Voltage Distribution Box - Rawsuns

High voltage distribution box is the control part of EV power supply, which has the functions of power distribution, current measurement, short circuit protection,

How Does a Power Distribution Box Work

Learn how a power distribution box works step by step—from incoming power to circuit protection and smart monitoring—for safe, efficient electricity delivery.

What is an Electrical Distribution Box? A

Discover everything you need to know about electrical distribution box! Learn about types, components, and how to choose.

Understanding Distribution Boxes: Your Guide to Power

Floor-Standing Distribution Boxes Meant for high capacity systems, these boxes are larger and put on the floor, making them common in industrial or

High Voltage Power Distribution Unit

A High Voltage Power Distribution Unit is an electrical assembly designed to route, protect, and monitor high-voltage circuits. It acts as the central hub for distributing power from the main battery or energy

Distribution Box: Key Functions, Components, and

Learn everything about the Distribution Box, its key components, and how to choose the right one. Explore our quality products and upgrade your

Distribution Boxes: Types and Functions

Learn what an electrical distribution box (DB/distribution board) is, its main components (MCB/RCCB/RCBO, SPD, busbar) and common types.

12 types of distribution boxes and how to choose them

Similarly, mismatching cables is huge; using thin power cables with high-voltage boxes causes resistance and heat. Chat with cable suppliers to get compatible wiring.

What Is An Electrical Transformer Box? A Definitive Guide

An electrical transformer box is a protective, enclosed unit containing a distribution transformer, which steps down high-voltage electricity to lower,

1. An Ultimate Guide for Metal Distribution Boxes

1) Metal Distribution Boxes Constructed from steel, aluminum, or cast iron, metal distribution boxes are highly durable and resistant to mechanical damage. Ideal

Electrical Transformer Boxes Guide: Components

Learn what transformer boxes are, their key parts, pad-mounted vs pole-mounted types, common issues, and safety practices for reliable and safe power distribution.

Electrical Transformer Box

Primary Function The primary function of an electrical transformer box is to step down high voltages from power lines to lower, safer voltages suitable for

Distribution Boards: Types, Components & Applications

Explore types applications of distribution boards, from power distribution to circuit protection, for safe and efficient electrical installations.

Electrical Components and Their Functions Inside the High-voltage ...

Also called power supply cabinet or power distribution cabinet, it is a device used to distribute electric energy (from the bus bar to each outlet), and generally installed with circuit

High-voltage junction and distribution box reference

Reference note for battery junction boxes and high-voltage distribution units that connect, protect and route EV pack power.

Contact Us

For more information, pricing, or custom solutions, please contact us:

Website: <https://charratcommunication.fr>

Email: sales@charratcommunication.fr

Phone: +33 1 42 68 93 17

Address: 15 Rue de la Paix, 75002 Paris, France

This document is for informational purposes only. Specifications subject to change without notice.

