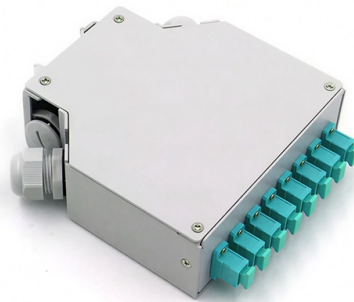


Main optical cable enters the cabinet



Overview

The fiber optic cable is in place from the local telephone exchange to a distribution point (commonly called a roadside cabinet), hence the name fiber to the cabinet. Improper connections can cause signal loss, downtime, or even permanent damage. Commercial buildings are increasingly wired with fiber optic cable to future-proof installations and create more reliable, higher-bandwidth and faster speed network and video infrastructures. In larger projects, fiber-based systems also easily exceed the distance limitation of twisted pair-based. However, from the picture you can see that the house builders (Charled Church) just drilled a hole through the wall to feed the internal wiring to the BT point in the hall. Behind this wall is the kitchen (and kitchen cabinets) and no power supply! I am assuming that there is no internal ducting for. The lifting of optical cables between floors in vertical systems, the narrow space application of communication cabinets in horizontal systems, the application of optical fibers to the desktop, and the application of communication through high-pressure air-filled spaces all put forward different. ICC/OCC Cabinets are fiber optic cross-connect cabinets designed to hold distribution housings configured for 23-in rack mounting. Cable and jumpers are routed out of the OCC cabinet bottom (Figure 1) and ICC top through knockouts. Openreach today connected the FF cable to a new grey box on the front wall. There are no power points anywhere near for the ONT which I.

Article Content

Optical Network Terminal (ONT) User Guide

Optical Network Terminal (ONT) User Guide Updated April 2021 seethelight from Sky uses fibre to bring you high-speed internet and therefore uses some equipment you may not be familiar with. This guide

What are the typical cabling methods for indoor distribution optical ...

Firstly, underground fiber optic cable reaches buildings through duct banks or conduits. Cables are connected within buildings with splice closures that protect against water and

How to Run Fiber Optic Cable in Your House

Complete guide to safely running internal fiber optic cable. Learn the methods for a high-performance, future-proof home network.

How does Fios come into the house: A Guide to Fiber Optic Installation

Mounting An ONT: Understanding The Equipment And Installation Process The Optical Network Terminal (ONT) is a crucial component in the Fios installation process, as it connects the

NEC770-50 | Information by Electrical Professionals for Electrical ...

NEC 770-50 Exception No. 1: Optical fiber cables shall not be required to be listed and marked where the length of the cable within the building, measured from its point of entrance, does

ICC/OCC Cabinets

Determine the length of cable required to get to the furthest housing if the entire cable were being terminated at the housing from the entry knockout in the cabinet.

Application Guide: Wiring Residential Buildings with

Fiber optic cable is used for everything from demarcation point wiring to network signal distribution to video signal extension. Often, fiber enters the structure to a routing of fibre cable within the house

The optical pigtail goes between the external box (CSP) and the ONT, and that's where the responsibility of Openreach (or Sky acting on their behalf) ends. If you choose to locate the Hub

Network cabinet placement and wiring tips

Network cabinet placement and wiring tips Many network devices are stored in the cabinets. In order to meet the normal operation of these devices in

An Introduction of FTTC (Fiber to the Cabinet)

Fiber to the cabinet is a connectivity technology that is based on a combination of fiber optic cable and copper cable. The fiber optic cable is in place from the local

Integrated wiring four types of optical cable indoor wiring

After the optical cable enters the building, it is necessary to provide the connection between the entrance equipment, the equipment room or the

Distribution Cabinet

Fiber Distribution Cabinets GAO's fiber distribution cabinets are enclosures used in telecommunications and networking infrastructure to house and manage fiber optic cables. These cabinets are installed in

The FOA Reference For Fiber Optics

All premises cables, copper or fiber, must be rated per electrical codes for flammability in order to be used indoors. Copper cables are rated differently than

Indoor vs. outdoor ONT: Where to does an optical

Indoor vs. outdoor installation: What's the difference? When it comes to ONT installation, you've got two main options: Indoor ONTs are installed inside

Application Guide: Wiring Commercial Buildings with Fiber Optic Cable

Fiber optic cable is used for everything from demarcation point wiring to network signal distribution to video signal extension. Often, fiber enters the structure to a centralized rack or data room where it is

The Fiber Optic Association

The main differences between ONU and ONT devices lie in the types and number of interfaces, as well as the adaptability of the devices to the environment in which

Solved: FTTP cable entry into house

As mentioned earlier there are kitchen cabinets against the outside wall of the kitchen. I am wanting the fibre to feed the Openreach supplied ONT into my

Indoor and Outdoor Fiber Optic Cable Installation: Key

Selecting the right fiber optic cable ensures efficient data transmission, longevity, and durability in various environments. This guide

Routing fibre cable from entry point to ONT box

Re: Routing fibre cable from entry point to ONT box It would be much easier to run an Ethernet cable, but presume the main objection is lack of power socket for the ONT.

How to Arrange Optical Fiber Optic Patch Cords in the

Effectively arranging optical fiber optic patch cords in a cabinet is a critical aspect of maintaining a streamlined and organized network infrastructure.

Fiber Patch Panels: A Beginner's Guide | RLH

Fiber optic patch panels are enclosures that act as a distribution hub for fiber cable. A bulk (multi-strand) fiber cable enters the patch panel and then each fiber strand

Designing and Building an Electrical Panel Part 2:

Fixed to a floor—This is useful for large and heavy cabinets. Cables can enter through the top or bottom. For bottom entry, the floor can incorporate a

Optical Distribution Frame Cabinet

Optical Distribution Frame Cabinets* Belden's DCX Optical Distribution Frame (ODF) Cabinets are fully configurable, front access cabinets that serve as a high-density

How to Connect an Optical Cable | Home Cinema Guide

Optical audio can sound great, but how do you wire an optical cable to your system? Learn how to connect an optical cable to your TV, soundbar and

How to Properly Connect Two Fiber Optic Cables Inside a Cabinet

The safest and most standardized way to connect two terminated fibers inside a cabinet is by using patch cords and adapters. This approach maintains network performance while allowing

How does Fios come into the house: A Guide to Fiber Optic Installation

Fios installation is a systematic process that ensures a smooth transition to fiber optic technology. This step-by-step guide will give you a clearer understanding of how the installation

Cable entry into cabinet/panel -top or bottom?

Cable entry into a cabinet/panel is usually done from bottom. But is there any advantages for this? Are there any standard recommending it? What is wrong in having top entry?

What's involved in getting a fibre optic connection? | F4RN

What's involved in getting a fibre optic connection? The F4RN broadband network provides a fibre optic cable all the way to the property - something generally

The Ins and Outs of Optical Fiber Cable Installation

Nonconductive optical fiber cables cannot occupy a cabinet, outlet box, panel, or similar enclosure housing the electrical terminations of an electric light, power,

Contact Us

For more information, pricing, or custom solutions, please contact us:

Website: <https://charratcommunication.fr>

Email: sales@charratcommunication.fr

Phone: +33 1 42 68 93 17

Address: 15 Rue de la Paix, 75002 Paris, France

This document is for informational purposes only. Specifications subject to change without notice.

