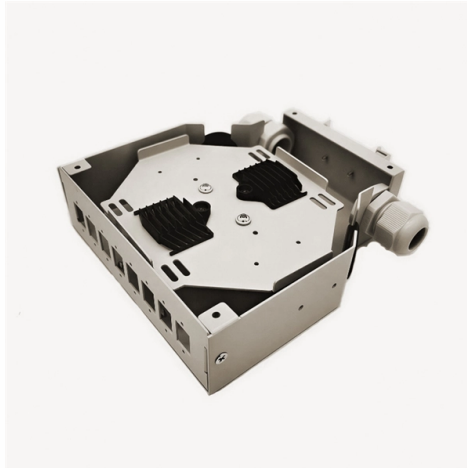


# Main power distribution box and sub-distribution box at construction site



## Overview

This includes a connection point (for example via a site connection box), the main distribution with protection and metering devices, sub-distributions, cables, plug systems, as well as organizational measures for operation, testing, and maintenance. A reliable construction site power connection is the foundation for safe workflows, predictable schedules, and the efficient use of electrically powered equipment. This applies to tower cranes, lighting, containers, and tools as well as to hydraulic power packs that supply concrete demolition. A construction power distribution box is an essential part of a construction site as it ensures that the power needs of all the equipment and machinery on the site are met. The main distribution box (or distribution room) shall be set up. They also include metering systems, ensuring.



## Article Content

Site distribution box: "specific location, need specific you"

The power distribution system of the construction site is classified into three levels, and the main distribution board (or distribution room) is set. The switch box is set

Distribution Board Design: Standards, Surge Protection

Early planning of a distribution board's layout and component selection is essential for long-term system performance. Considering power

ENERGYBOX Assemblies for Construction Sites (ACS)

ENERGYBOX is a complete range of Assemblies for Construction Sites (ACS) pre-wired boards that can be wall-mounted or installed on a support.

ENERGYBOX Assemblies for Construction Sites (ACS)

The panels are made in a sturdy and handy two-component technopolymer cabinet with a fire-resistant backrest, which allows them to be stored and reused in the

Understanding Distribution Boxes: A Comprehensive Guide

A distribution box is used to receive electrical power from a main supply and distribute it to multiple branch circuits in a safe and controlled way. It

Construction Site Distribution Board

In this article, we'll break down what a distribution board is, what components it includes, how to choose the right one, and why it matters for the safety and

The Meaning and Function of Primary, Secondary, and Tertiary ...

This structure ensures effective power management, safety, and reliability in complex electrical systems, particularly on construction sites or large-scale projects.

The life of a power substation project: Design,

HV project design aspects This technical article covers numerous substation project design elements, lists the steps of the construction process,

Complete Guide to Commercial Distribution Panels [May

A commercial distribution panel is more than just a box with wires — it's the heart of a building's electrical system. It helps manage power flow,

Power supply on the construction site

A site power distribution board is usually an electrical distribution box equipped with various sockets to provide power for different equipment and machinery. A construction power distribution box may also

Per diem rates

Per diem rates We establish the per diem rates that federal agencies use to reimburse their employees for lodging and meals and incidental expenses incurred while on official travel within

Distribution Boxes: Types and Functions

Types and Functions of Different Distribution Boxes Main Lug Panel This type of distribution box is typically used downstream of a main breaker. The

10 Distribution Board Types Explained [May 2026 ]

Key Takeaways A distribution board safely distributes electrical power from a main source to various circuits and areas within a building. There are 10

How to Choose the Right Power Distribution Box for Your

Select the right power distribution box by matching site power needs, safety standards, and future expansion for reliable construction site performance.

Power Distribution Systems

The distribution of electrical power is the final and most important step in the journey of electricity from generating facilities to consumers. AC power distribution

Construction site power distributors

The full range comprises connection cabinets, connection distributors, main and group distributors, distributor and terminal distributor cabinets. The portfolio includes matching standard products for

Panelboards and Distribution Panels: What They Are

Introduction Navigating the world of electrical distribution can be confusing, with terms like panelboard, switchboard, and distribution box often

Construction Site Power Connection

This includes a connection point (for example via a site connection box), the main distribution with protection and metering devices, sub-distributions, cables, plug systems, as well as

Power Distribution Equipment

Mini Power-Zone: Mini Power-Zone combines a transformer and circuit breaker distribution panel into a single wall mounted substation. The substation includes a primary main circuit breaker, sealed step

Distribution Box: Types and Functions | Axis-Electricals

A distribution box ensures that electrical supply is distributed in the building, also known as a distribution board, panel board, breaker panel, or electric panel. It is

The Meaning and Function of Primary, Secondary, and Tertiary ...

Primary Distribution Box: Serves as the main distribution box for a construction site or project (usually only one). Secondary Distribution Box: Serves each floor or building as needed.

Key Points Of Installation And Collocation Of Distribution Box In ...

The main distribution box (or distribution room) shall be set up. The distribution box shall be set below the main distribution box, and the switch box shall be set below the distribution box, and the electrical

## Contact Us

For more information, pricing, or custom solutions, please contact us:

Website: <https://charratcommunication.fr>

Email: [sales@charratcommunication.fr](mailto:sales@charratcommunication.fr)

Phone: +33 1 42 68 93 17

Address: 15 Rue de la Paix, 75002 Paris, France

This document is for informational purposes only. Specifications subject to change without notice.

