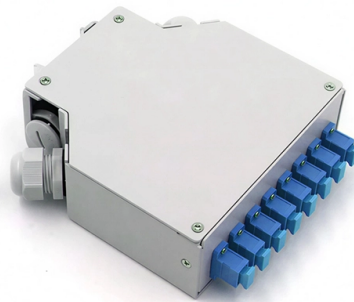


Monitoring Distribution Box aljk



Overview

A low-voltage distribution box with both energy monitoring and carrier communication capability is developed to collect, store and transmit multi-channel current, voltage, power, and electrical degree surveillance and other information, and the detail of its hardware design. A low-voltage distribution box with both energy monitoring and carrier communication capability is developed to collect, store and transmit multi-channel current, voltage, power, and electrical degree surveillance and other information, and the detail of its hardware design. Remote distribution box monitoring By leveraging the intelligent remote monitoring function, you can collect the electric meter readings and implement networked transmission and control the safety energy. Background Traditional distribution boxes are difficult to implement remote monitoring due to. The EC1000 Energy Box is the latest evolution of ATEN's energy intelligence solutions. It is the intelligent, cost effective solution to monitor ATEN's Energy PDU s - to ensure safe and effective energy-saving power management. Through the new generation of Internet of Things communication technology, the cloud integration of data such as voltage. ABB's Control Room offering includes a comprehensive range of solutions designed to optimize the operator workspace for critical 24/7 processes across various industries. The control room is considered one of the most critical areas in any facility, impacting daily decision-making and overall. EK NRO System is the system which enables its users to monitor and control the current consumption at distribution boxes and feeders within a multi-storey business facilities or a complex of. Power Distribution Box Power and Signal Connections (Cont) Table 1-1.

Article Content

Online Monitoring System for Domestic Distribution Box

A new method for monitoring and control of domestic distribution box is proposed and developed for automated recovery of power continuity during interruption.

Traductor de Google

El servicio de Google, que se ofrece sin coste económico, traduce al instante palabras, frases y páginas web a más de 100 idiomas.

Intelligent Remote Distribution Box Monitoring Solution

The distribution box is embedded with the DTU distribution device, distribution device power module, and distribution device power supply. By leveraging the intelligent

Difference Between a Distribution Box and a Junction

Discover the key difference between a distribution box and a junction box, including their functions, structure, and ideal applications.

IP65 ABS Junction Box Plastic Waterproof Distribution

Buy IP65 ABS Junction Box Plastic Waterproof Distribution Box Outdoor Monitoring Power Junction Box Sealed Waterproof Enclosures-AG at Aliexpress for . Find

What is a distribution box□

Purpose Edit broadcast Distribution box has the characteristics of small size, easy installation, special technical performance, fixed position, unique

TM-32-6110-003-24-P Distribution Box J-3986/ALQ-151 (V) DAAK-20

TOOL AND TEST EQUIPMENT REOUIREMENTS FOR DISTRIBUTION BOX J-3986/ALQ-151 (V) Appendix C: REPAIR PARTS AND SPECIAL TOOLS LIST FOR DISTRIBUTION BOX J-3986/ALQ

Explore Power Distribution Box Types and Functions

Electrical distribution boxes are used in commercial and residential buildings and are part of the electrical system, also known as switchboards. It

Monitoring System for Distribution Box Power Trips

The system is designed to provide real-time monitoring and control of Miniature Circuit Breakers (MCBs) in distribution boxes. By leveraging the ESP32 Devkit's capabilities and Blynk's

WTYJ-PD type distribution box monitoring system

Product positioning Intelligent distribution box monitoring instrument, supporting real-time electrical data collection, energy consumption measurement and safety early warning.

A Low-Voltage Distribution Box with Energy Monitoring and Carrier ...

The investment cost of the distribution box is low, and easy to be installed and maintained, and can be widely used in various industries for middle and small-sized enterprises.

Distribution boxes - For modular and decentralised

We provide you with information on our distribution boxes for download. Download our product catalogue for sensor-actuator cabling and circular connectors or our

Discover Europe's digital cultural heritage | Europeana

Hier sollte eine Beschreibung angezeigt werden, diese Seite lässt dies jedoch nicht zu.

Design and Implementation of State monitoring System for Distribution Box

Cable junction in distribution box is the weakest part of secure operation in power system, and the cable operation faults are mainly caused by junction faults. Therefore, we design a flexible

4-Way Monitoring Junction Box

Introduction The 4-Way Monitoring Junction Box canister uses a low resistance detonator for discharge. When two or more canisters are wired in parallel to be discharged together, the monitoring of any

Power management and monitoring

Take your power distribution equipment to the next level by managing your critical loads at the individual circuit level. Rely on Cyberex circuit management solutions to monitor and alert your staff of potential

IOT Based Power Monitoring Device (Distribution Box)

Abstract The main idea of IOT Based Power Monitoring Device (Distribution Box) is fixed on the distribution box to let users know on how much the current they used. Besides that, the device

Low voltage Distribution Box Monitoring

Abstract: In this Paper, the primary focus is on the distribution box health monitoring from which load power distribution monitoring is done. Distribution box is one from which power is distributed to low

Energy Box with Real-time Power Monitoring

The Energy Box allows power and environmental data to be monitored and displayed at the rack or remotely for easy viewing and maintenance. The Energy Box is a

Complete Guide For Distribution Boxes Types

Distribution boxes, also known as electrical distribution boards or panels, are pivotal components in electrical systems, ensuring the safe and organized distribution of

Plug & Play Monitoring for Distribution Substations

Since the infrastructure is very durable and not all distribution substations are equipped with sensors, this paper presents a Plug & Play monitoring system that can be easily integrated into

Distribution Box Enclosures | Safe & Reliable Power Protection

A distribution box enclosure is a protective housing designed to safely organize and protect electrical distribution components such as circuit breakers, wiring terminals, fuses, switches, and monitoring

Mains distribution box for supplying up to 4 earthing

Required for power sub-distribution if several stations used Wall mounted For 2 -4 EP earthing stations Product information Glass fibre reinforced plastic Housing

EK NRO System for distribution box control | EK Systems

EK NRO System is the system which enables its users to monitor and control the current consumption at distribution boxes and feeders within a multi-storey

Innovations in Distribution Boxes: Smart Monitoring and Remote ...

This article explores the latest innovations in Distribution Boxes, focusing on smart monitoring and remote maintenance capabilities that are redefining power distribution management.

Intelligent Remote Distribution Box Monitoring Solution

Remote distribution box monitoring By leveraging the intelligent remote monitoring function, you can collect the electric meter readings and implement networked

ALK | ALK

ALK (Allergologisk Laboratorium København) est un laboratoire pharmaceutique danois spécialisé dans la recherche et le développement de médicaments

Contact Us

For more information, pricing, or custom solutions, please contact us:

Website: <https://charratcommunication.fr>

Email: sales@charratcommunication.fr

Phone: +33 1 42 68 93 17

Address: 15 Rue de la Paix, 75002 Paris, France

This document is for informational purposes only. Specifications subject to change without notice.

