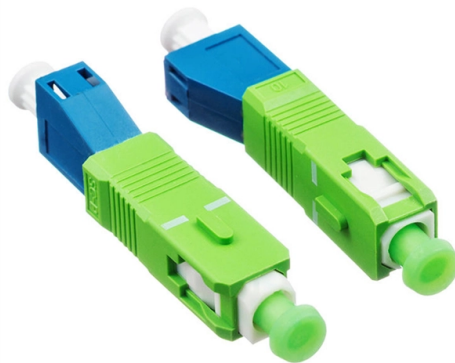


Requirements for the thickness of the complete electrical distribution box enclosure



Overview

The enclosure is made of cold-rolled or stainless sheet steel with a thickness ranging from 1.5 mm to 3 mm, which is bended and welded. The Complete reference for CRCA, GI, SS 304 and SS 316 sheet metal thickness requirements for LT switchgear panels, junction boxes, motor control centres, distribution boards, and industrial enclosures per IS 8623, IS 2147, IEC 62208 and IEC 60529 IP rating standards. It takes the incoming power and safely distributes it to different circuits throughout your building. However, the key to. The floor cabinet is made of 2.2 mm thick. An electrical enclosure is a purpose-built cabinet designed to house electrical and electronic devices, providing the required protection to keep operators/personnel safe from electrical shock hazards and devices protected from hazardous environments as well as accidental damage. Today's enclosures. The guide lists the process of design, assembly and documentation of a low-voltage switchgear assembly in the order of the necessary steps and at the same time assigns to these steps the relevant sections from the standard IEC 61439 / EN 61439.

Article Content

The installation requirements for the distribution box

Introduction
Understanding The Components of A Distribution Box
Selecting The Right Distribution Box
Site Preparation and Location Requirements
Electrical Connections and Wiring
Compliance with Standards and Regulations
Conclusion
Proper installation of a distribution box isn't just a technical requirement. It's a vital step in ensuring the safety and efficiency of your entire electrical system. Following best practices reduces the risk of electrical fires, power outages, and other hazards, protecting your property and keeping everyone safe. If you're looking for a reliable,...
See more on eabel
Published: Feb 7, 2025

Videos of Requirements For The Thickness Of The Complete Electrica

more videos

Watch video6:05Enclosure Selection Basics: NEMA Rating, Size, Heat & Material RSP Supply35.1K viewsOct 23, 2017
Watch video8:40Electrical Panel Enclosure Explained | Enclosure IP rating, Gland Plates, Cable Glands, Hole Cutter Upmation94K viewsAug 14, 2021
Watch video7:32How to design distribution box or DB size ? Electrical Platform1.4K viewsFeb 19, 2025
Watch full videograndelectrics

Specific design requirements for distribution box.

The various indexes of the boards of distribution boxes or distribution cabinets must meet the relevant requirements of the state. All distribution boxes or distribution cabinets shall be made of cold-rolled

Enclosures 101: An introduction to electrical

To many end-users an enclosure is simply a box in which to store electrical components or connections, and the specification process

MNS® Low Voltage Distribution Board and Power Cabinet

The enclosure is made of cold-rolled or stainless sheet steel with a thickness ranging from 1.5mm to 3mm, which is bended and welded. Concealed hinged are used.

Common Electrical Enclosure Sizes

Electrical enclosures come in a wide range of sizes to accommodate various applications, from small 75 x 125 x 35 mm boxes for compact setups to

Practical Guide to Electrical Enclosures for Industrial Applications

Selecting electrical enclosure features based on the required size and environmental conditions is the starting point of the design. The design phase includes panel layout, enclosure layout, and thermal

Electrical Enclosure Sizes: Comprehensive Guide to

Find the right electrical enclosure size for any project. This guide covers standard sizes, selection tips, ratings, and sizing charts.

The Requirements of an Electrical Enclosure

An electrical enclosure is a protective box that holds important electrical parts like switches, wires, or control panels. Its main job is to keep those

Electrical Enclosures Sheet Metal Specs

Complete reference for CRCA, GI, SS 304 and SS 316 sheet metal thickness requirements for LT switchgear panels, junction boxes, motor control centres, distribution boards, and industrial

TECHNICAL SPECIFICATION FOR LT DISTRIBUTION BOX

General Technical Particulars for LT Distribution Boxes : - The L.T. Distribution Boxes should be of the dimensions as per the drawing & details in the table furnished.

A Complete Guide to Choosing the Right Electrical

When it comes to protecting electrical equipment, choosing the right electrical enclosure (also referred to as an electrical box, junction box, or breaker

Standard Electrical Enclosure Sizes: Chart, Dimensions

Electrical enclosure sizes are not universal, but most manufacturers follow common size families. This guide explains typical wall-mount and floor

Outdoor Electrical Distribution Box Specifications: NEC

Complete specification guide for outdoor electrical distribution boxes covering NEC Article 312 requirements, NEMA ratings, sizing calculations, and

Enclosures 101: An introduction to electrical enclosure specification

To many end-users an enclosure is simply a box in which to store electrical components or connections, and the specification process

What Is an Electrical Enclosure? Complete Guide

Complete Guide An electrical enclosure is a protective housing that shields electrical components from dust, water, and damage while preventing

Electrical Enclosure Standards | Polycase

Electrical enclosure standards like NEMA ratings and IP ratings are important for choosing the right enclosure. Here's what you need to know.

The installation requirements for the distribution box

Introduction
Understanding The Components of A Distribution Box
Selecting The Right Distribution Box
Site Preparation and Location Requirements
Electrical Connections and Wiring
Compliance with Standards and Regulations
Conclusion
Proper installation of a distribution box isn't just a technical requirement. It's a vital step in ensuring the safety and efficiency of your entire electrical system. Following best practices reduces the risk of electrical fires, power outages, and other hazards, protecting your property and keeping everyone safe. If you're looking for a reliable, ... See more on eabel
Published: Feb 7, 2025
grandelectrics

Specific design requirements for distribution box.

The various indexes of the boards of distribution boxes or distribution cabinets must meet the relevant requirements of the state. All distribution boxes or distribution cabinets shall be made of cold-rolled

How to Choose the Right Distribution Box for Your Home or Workshop

This highly technical guide details the exact engineering criteria required for selecting, precisely sizing, and optimally configuring the correct enclosure for your specific electrical load profiles.

2016_Guide_IEC_EN61439_en_98171000_5_2016 dd

The manufacturer considers this information and assembles the distribution board according to these requirements. The measures and recommendations given must be considered for the safe operation

Key Material Requirements for Distribution Box

Learn the key material requirements for distribution box, Discover how the right materials ensure long-lasting performance and safety.

Printed circuit board

With decreasing size of board features and increasing frequencies, small non-homogeneities like uneven distribution of fiberglass or other filler, thickness

Detailed introduction of safety requirements for distribution box

The distribution box and switch box shall be made of steel plate (with thickness of 1.2-2.0mm) or flame-retardant insulation material. 5. The power switch installed in the distribution box

Electrical Enclosure Box Sizes and Selection Tips

Explore standard electrical enclosure box sizes, learn how IP ratings and materials affect design, and calculate the right dimensions for your project.

Contact Us

For more information, pricing, or custom solutions, please contact us:

Website: <https://charratcommunication.fr>

Email: sales@charratcommunication.fr

Phone: +33 1 42 68 93 17

Address: 15 Rue de la Paix, 75002 Paris, France

This document is for informational purposes only. Specifications subject to change without notice.

