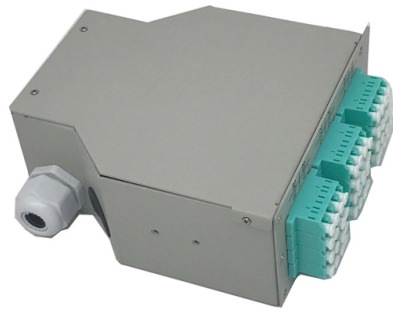


Should the workshop use cable trenches or cable trays



Overview

Use cable trays when cables need airflow, access, or frequent changes. Cable trays are above-ground systems that support and organize cables. The biggest difference is how they're installed—trays are exposed. Cable trays and cable trenches are two widely used methods for organizing and protecting electrical cables in industrial, commercial, and residential setups. While they serve the common purpose of routing and securing cables, these systems differ in design, application, installation, and. Choosing the right cable management system is crucial for safe, organised, and cost-effective installations. However, not all installations require cable trays, and it's. In instrumentation EPC (Engineering, Procurement, and Construction) projects, installing cable trays is very important for making sure that signals are sent reliably, that people are safe, and that systems work well for a long time.



Article Content

What are Cable Trays & Different Types of Cable Trays

Learn what cable trays are & explore the various types, benefits, and purposes. Gain insights into how electrical cable trays can revolutionize your

Type of Tray Cable and Benefit of Cable Trays

Whatever the design, cable trays have their own distinct requirements for effective operation and therefore necessitate the use of [tray cable](#) that has its own attributes and

Cable Tray Technical Guide A practical guide to product selection and ...

SOLID-BOTTOM CABLE TRAY Providing additional cable protection, solid-bottom cable tray is sometimes preferred to support and protect numerous small instrumentation and control cables.

Cable Tray Systems: Requirements and Best Practices

Cable tray routing should be coordinated with building layout and other services (pipes, ducts, mechanical systems): Plan main routes along corridors, pipe racks, or dedicated cable

Difference Between Cable Tray and Cable Trench | Hutaib Electrical

Explore the differences between cable trays and cable trenches for effective cable management. Learn about their design, applications, advantages, and limitations, and how Hutaib

Cable Tray SHIB NAL

Where a cable tray includes only multiconductor cables, there is generally no need to use the tray as an equipment grounding conductor because each multiconductor cable should have integral equipment

What is the difference between cable ladders and cable

When it comes to cable ladders and cable trays there are a few fundamental distinctions that should make your choice of support easier.

Cable Tray Installation Guide

Grounding and Bonding Connect cable trays to the grounding system to prevent electric shocks and ensure safety and compliance. Bonding wires

Enhancing Workplace Safety with Cable Trays | Reducing Hazards

Workplace safety is of paramount importance, and when it comes to cable management, the proper use of cable trays can significantly contribute to creating a safe and accident-free

What Is the Difference Between Cable Tray and Cable Trench?

The biggest difference is how they're installed—trays are exposed, trenches are buried. Let's break down how each system works, where to use them, and what to consider before choosing

Do You Really Need a Cable Tray? Here's How to Decide

When deciding whether or not to use a cable tray, it's important to consider factors such as cable quantity and density, cable type and size, cable

Cable trays are structural components of a facility's electrical system ...

Cable trays are structural components of a facility's electrical system, and as such, are part of a planned cable management system. The use and installation of cable trays are covered by OSHA in 29 CFR

Benefits of Cable Trench and Cable Tray Solutions

Learn the differences between cable trench and cable tray systems. This guide compares their structure, installation, and suitability for various setups.

100+ Essential Questions Answered About Cable Trays:

Discover over 100 expert answers about cable trays, covering key topics like material selection, load capacity, installation methods, and maintenance.

Cable Tray Systems: Requirements and Best Practices

This article explains the main requirements and good practices for cable tray systems, including tray types, materials, loading, supports, bonding, cable selection, and installation details.

Recommendations For Selection and Installation of

Cableways The term cableways refers to conductors and/or cables together with the means of support and protection, etc. for example cable trays,

Avoiding Mistakes in Instrumentation Cable Tray

This document lists the most typical mistakes that EPC teams should not make while installing instrumentation cable trays to make sure the plant runs

Enhancing Workplace Safety with Cable Trays | Reducing Hazards

Improve workplace safety by reducing hazards and accidents with the installation of cable trays. Learn about the benefits, best practices for installation, and maintenance tips that can help

ITER Cabling Handbook

All cables are routed within a suitable EMC protection (pipes, cables trays or trunkings).

Cable Troughing

This comprehensive guide delves into the world of cable troughing, providing electricians and professionals with in-depth knowledge about its

Cable Tray vs Cable Basket vs Cable Ladder vs Cable

Whether you're running power cables, data lines, or control wiring, the right choice between cable trays, baskets, ladders, and trunking can save time, reduce

How to Manage Cables in Cable Trays: Principles and Methods

Learn how to manage cables in cable trays effectively with our comprehensive guide for cable classification, protection, and installation to ensure electrical system safety and efficiency.

Cable Tray Installation

Learn everything about cable tray installation with our complete guide. Discover types, steps, and safety tips for efficient electrical cable management.

Contact Us

For more information, pricing, or custom solutions, please contact us:

Website: <https://charratcommunication.fr>

Email: sales@charratcommunication.fr

Phone: +33 1 42 68 93 17

Address: 15 Rue de la Paix, 75002 Paris, France

This document is for informational purposes only. Specifications subject to change without notice.

