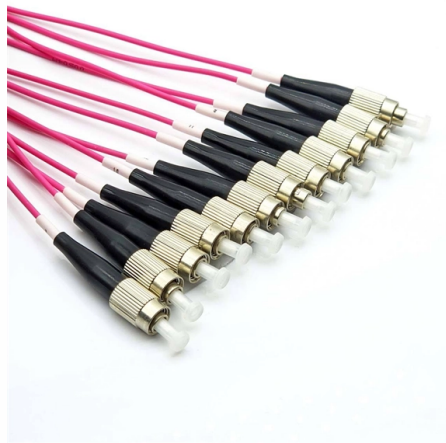


Switch box allocation and electrical box capacity



Overview

Calculate the required cubic inch capacity for junction boxes, switch boxes, and device boxes per NEC 314. Add conductor rows by AWG size and count, enter the number of devices, grounds, and cable clamps, then compare the total required volume against your box's listed. Part (A), "Box Volume Calculations," defines the volume of a wiring enclosure or box. The calculations must take into account the volume of the box as well as the volume of any extensions such as domed covers or extension rings. Review fill usage and spare capacity. Electrical Tips and Be Sure to Subscribe! Part (1) of Section 370-16 (a) describes in detail the method of counting wires, as well as clamps, fittings, or devices. To correctly calculate box fill for an electrical box containing multiple switches, you must follow the provisions of National Electrical Code (NEC) Section 314.

Article Content

Box Fill Calculator | Calculator.now

Calculate electrical box fill capacity according to the National Electrical Code (NEC). This calculator helps electricians determine if a box is large enough for the number of conductors,

Box Fill Calculator

Calculate electrical box fill capacity, determine NEC compliance, and ensure proper wire management. Free online tool for electricians and electrical contractors.

How to Calculate Box Fill for Multiple Switches (NEC

A step-by-step guide to calculating electrical box fill for multiple switches and devices according to NEC 314.16, ensuring code compliance.

Electrical Box Fill Calculator Online

The electrical box fill calculator plays a crucial role in the field of electrical engineering. It aids professionals in determining the capacity of an

NEC Reference Metallic Boxes

NEC® Reference Article 314 of the National Electrical Code® covers the installation and use of boxes. The article includes table references that guide the electrician in the selection of the proper box size

Box Fill Calculator

The box fill calculators help you calculate the suitable box volume with the required capacity to fit conductors, wires, and fittings.

Electrical Box Capacity Calculator

Electrical Box Capacity Calculator Calculate box capacity with conductors, devices, clamps, and grounds. Review fill usage and spare capacity. Export results for permits, estimates, and field checks

Electrical Box Fill Calculator | RatioLab

What does Electrical Box Fill Calculator calculate? Electrical Box Fill Calculator helps you estimate Volume for ground wires, Volume for clamps, and Volume for devices from Number of 14 AWG wires,

Electrical Box Size Calculator

Why Proper Electrical Box Sizing Matters: Ensuring Safety and Compliance Essential Background An electrical box houses wires, switches, outlets, and other components. Its size must

Box Fill Calculator — NEC 314.16 | WireSizes

Professional NEC 314.16 compliant box fill calculator for electrical installations. Ensure proper box sizing for switches, outlets, and junction boxes with accurate conductor volume calculations.

How Much Can You Fit in a Single Electrical Box?

If you have a custom box, then there is a reliable way to calculate the maximum safe box fill. Single Gang Boxes Single-gang electrical enclosures are those with a single rectangular space.

Free Online Box Fill Calculator

Determine Box Size: Identify the volume of the electrical box, which is usually specified by the manufacturer. Count Conductors: Include all conductors entering and leaving the box. This includes

Electrical Box Dimensions: Find the Right Size for Any

Learn standard electrical box dimensions for outlets, switches, and junction boxes. Compare sizes, depths, volume, and clearance for safe installations.

Understanding Electricity Switch Boxes: A Guide

Here, we explore three main categories: standard electrical boxes, smart switch boxes, and outdoor switch boxes. Each type has distinct features that cater to

Switch Allocation Problem in Power Distribution Systems with

Research on distributed generation in power systems is of great interest due to its potential benefits in reducing environmental impact and improving overall system reliability and

Electrical Box Capacity Calculator

Estimate box fill volume from conductors, devices, and grounds. Compare required capacity before wiring. Check spare margins for safer installation planning and review.

Understanding Electrical Panel Capacity: How Much

When planning or upgrading a home's electrical system, understanding the capacity of your electrical panel is crucial. It ensures safety,

City of Republic Community Development Department Electrical Box

Every outlet box has a specific amount of space for conductors, devices, and fittings. We call that the box volume. You calculate box volume per 2012 IRC Section E3905.12.1.1 and box fill per 2012 IRC

Box Fill Calculator (NEC 314.16) | Junction Box Fill

Calculate the required cubic inch capacity for junction boxes, switch boxes, and device boxes per NEC 314.16 (B). Add conductor rows by AWG size and count, enter the number of devices, grounds, and

Box Fill Calculator

This Box Fill Calculator is used to determine the required size of an electrical wiring box for safely accommodating conducting and grounding wires.

What Are the Standard Light Switch Box Dimensions?

The most common way to describe an electrical box's physical size is by its "gang" count, which refers to the number of devices it is designed to hold. A single-gang box accommodates one

Electrical Code for Electrical Box Fill Capacity

One of the mistakes often made is over loading an wire electrical box with too many wires. This will cause switches and outlets to not fit correctly and could even cause wires to become damaged. This

Contact Us

For more information, pricing, or custom solutions, please contact us:

Website: <https://charratcommunication.fr>

Email: sales@charratcommunication.fr

Phone: +33 1 42 68 93 17

Address: 15 Rue de la Paix, 75002 Paris, France

This document is for informational purposes only. Specifications subject to change without notice.

