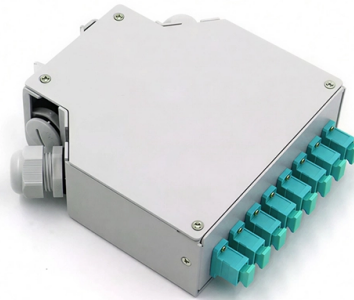


# What brand of cold-joint splice is good and affordable



## Overview

In 2025, trusted brands like Amphenol, LEADSIGN, and TE Connectivity lead the way. Choosing the right brand matters for your safety and the long-term performance and reliability of your projects. Our broad portfolio of electrical joints and splices are made for low, medium and high voltage electrical connections. Our portfolio of power. Inline splice for joining JCN, flat strap neutral, tape shield and LC cables Special-electrode design reduces electrical stress at critical cable and splice interface Designed for feeder and distribution circuits, size transition splicing, direct-burial installations and submerged locations For. TE Connectivity's (TE) Raychem CSJA "All-In-One" joints offer a reliable, fast and easy-to-install jointing system to assure and maintain high network reliability. TE's Raychem CSJA are designed to splice tape shield, wire shield, LC shield, UniShield, JCN and flat strap shielded cables from 15 kV. The versatile design of the prefabricated one-piece cold shrink splice body allows installation on a wide range of cable sizes and types and a fast and easy installation at temperatures ranging from - 20°C to + 50°C. These products provide a cost-effective method to splice medium voltage cables using a push-on motion, and allowing cable neutrals to be solidly connected across the body of the splice without the use of any external braids. The Elaspod® is not a molded splice. It is manufactured in exactly the.

## Article Content

WORLD WIDE WEB JOURNAL Home

O'Reilly & Associates, Inc. 103A Morris St. Sebastopol, CA United States

PRODUCT BROCHURE Elastimold PCJ power cable joints Versatile

Incorporating more than 30 years of field-proven reliability, Elastimold PCJ power cable joints give you options for straight splicing of two similar cables or transition splicing of different cable sizes — up to

Fiber optic quick connector cold joint

Internal structure of optical fiber quick connector/cold joint The ferrule and end face inside the fiber optic quick connector/cold splice have been pre-ground and pre-polished before leaving the factory.

Cold Splice Wire Tap (UB)

Go "cold splice" with these snap-able plastic splices for fast connections. Use with any 22-26 AWG solid core wire and slip them into the plastic splice so that they

3MTM Cold Shrink QS-III Silicone Rubber Splice Kit 69 kV

Splice Features: Cold Shrink Design — for quick and easy installation; excellent for cable size transitions Complete Kit — includes everything required to make one splice Silicone Rubber Construction — for

CABLE JOINTING, JOINTING KITS, 3M COLD SHRINK JOINT SPLICE

An expert from 3M details Standard 3M Cold Shrink Joint uses Scotch 13 Semi conducting tape to overtape the cable connector during cable jointing. The taped electrode cable splice offers a viable

3M™ Cold Shrink Medium Voltage splice joint kit QS200 93-AK, 620-1 ...

The 93-AK xx0-1 Inline Joint Series includes the Cold Shrink QS200 silicone splice body with integrated electrode, stress control device, silicone elastomer insulation and outer semi-conductive layer,

3M Cold Shrink Splices: Splices to Fit All Electrical Cable Systems

Abstract Unlike most splice manufacturers who design and provide one splice for all voltage classes and standards, 3M has many splices that can accommodate the different systems. This paper will discuss

Electrical Joints | TE Connectivity

Our Raychem Cold Shrink Joint (CSJA) is an all-in-one solution. It is designed for use on 1/C shielded power cables (15-35 kV). Watch the CSJA installation video

## Heat Shrink vs Cold Shrink: A Comprehensive Comparison

This guide provides an in-depth comparison of heat shrink vs cold shrink technology to help you make the best decision for your application.

### A Detailed Comparison of Wire Splicing Methods | Multi

Custom cable experts detail various wire splicing methods, including advanced machinery for increased efficiency, and discuss pros, cons and best practices.

### TE Connectivity Raychem CSJA-1521 Cold Shrink "All-In

TE's Raychem CSJA are designed to splice tape shield, wire shield, LC shield, UniShield, JCN and flat strap shielded cables from 15 kV up to 35 kV. The

### Medium Voltage Splice Kits

We offer a variety of medium voltage splice kits to splice or join together two or more medium voltage cables. We carry brands like 3M, Tyco, Raychem, Elastimold

### Cold 3-Wire Splice (UR)

Go "cold splice" with these snap-able plastic splices for fast connections. Use with any 19-26 AWG solid core wire and slip them into the

### How Top Wire Splice Connector Brands Stack Up This

When you look for the best wire splice connectors, you want to know which brands lead the market. In 2025, Amphenol, TE Connectivity, and

### Inline Splice: Cold Shrink, 15-35 kV

TE's Raychem in-line cold shrink joint (CSJA-1C) for 1/C shielded cable from 15 kV to 35 kV, is designed to splice tape shield, wire shield, LC shield, UniShield, JCN

### Medium Voltage (MV) Accessories Catalog

The Elasppeed® splice is quick and easy to install, saving time and cost over alternative methods. The Elasppeed® is not a molded splice. It is manufactured in exactly the same way as extruded dielectric

### A56 ELASTIMOLD/FISHER PIERCE

ross the splice a challenge. Now there's a faster and easier way to splice medium-voltage cables - One that combines all of the convenience and flexibility of a pre-molded splice, with the range-taking ease

### 3M™ Cold Shrink QS4 Integrated Splice Kits 15-SP Series

Our splices maintain a tight, reliable seal that automatically expands and contracts with changes in temperature and electrical load — without losing pressure. Just

### 3M Splices & Accessories | 3M United States

3M™ Cold Shrink Mine and Portable Splice Kit 8043-1, Max. Cable O.D. 1.80 in, 1/Case. Components for repairing, augmenting, or continuing an existing wire or Splice Kits

3M™ Cold Shrink Shielded Splice Kit 5550 Series are for splicing 5 kV and 8 kV shielded, solid dielectric, power cables. Meets requirements of IEEE 404. Each kit contains all the materials (except

What is Fiber Cold Splice?

What is Fiber Cold Splice? The fiber quick splicing connector is also called field assembly connector, means only use simple splicing tools not fusion splicer to realize drop cable terminated.

3M Cold Shrink Splices | 3M United States

3M electrical splices feature cold shrink technology, which is engineered for easy installation by unwinding the inner core.

## Contact Us

For more information, pricing, or custom solutions, please contact us:

Website: <https://charratcommunication.fr>

Email: [sales@charratcommunication.fr](mailto:sales@charratcommunication.fr)

Phone: +33 1 42 68 93 17

Address: 15 Rue de la Paix, 75002 Paris, France

This document is for informational purposes only. Specifications subject to change without notice.

